

CAPITOL VIEW HEIGHTS

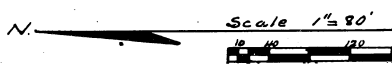
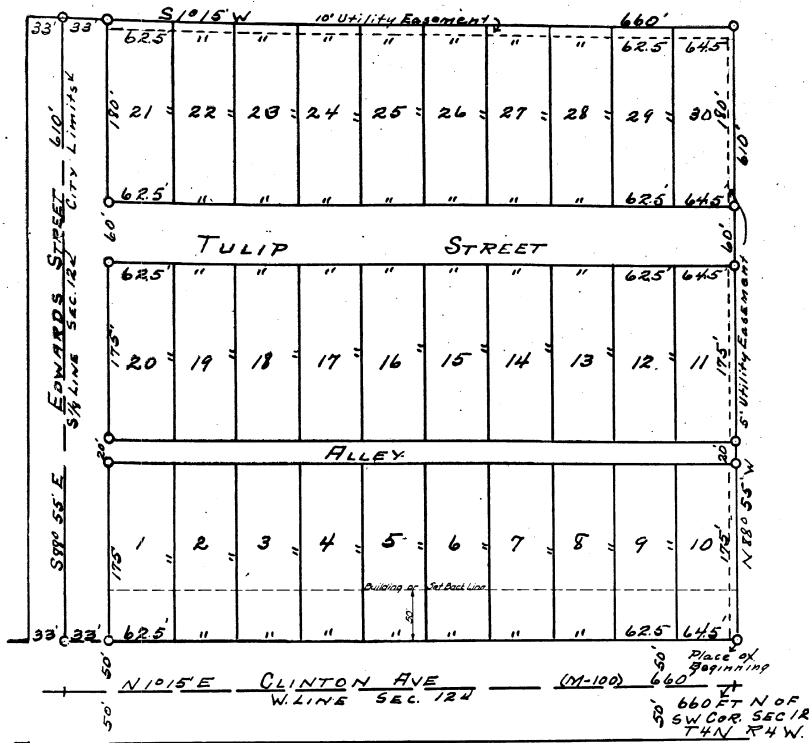
SUB OF THE

NW 1/4 of SW 1/4 of SW 1/4 SECTION 12 T4N R4W

ONEIDA TOWNSHIP EATON COUNTY

MICHIGAN

All dimensions in feet & tenths.



MUNICIPAL APPROVAL

This plat was approved by the Township Board
 of the Oneida Township of Oneida
 at a meeting held Dec 22

Don Shrontz (Clerk)

APPROVAL BY COUNTY BOARD

This plat was approved on the APR 9 1946 day of April

Leonard E. Marshall
 Leonard E. Marshall (County Register of Deeds)
Tebe Teman (County Clerk)
Clarence E. Paddock (County Treasurer)

CERTIFICATE AS TO STATE TRUNK LINE OR FEDERAL AID ROADS

We hereby certify that said plat appears to include land located on a state trunk line or federal aid road.

Leonard E. Marshall
 Leonard E. Marshall
Tebe Teman
 Tebe Teman
Clarence E. Paddock (County Plat Board)

COUNTY TREASURER'S CERTIFICATE

Office of County Treasurer, Eaton County, Michigan.
 I hereby certify that there are no tax liens or titles held by the State on the lands described herein, and that there are no tax liens or titles held by individuals on said lands, for the five years preceding the 3rd day of Dec 1945, and that the taxes for said period of five years are all paid, as shown by the records of this office, except None.
 This certificate does not apply to taxes, if any, now in process of collection by township, city or village collecting officers.

Clarence E. Paddock
 Clarence E. Paddock (County Treasurer)

HEREBY CERTIFY THAT THIS COPY IS A TRUE COPY OF THE DEED OR PLAT FORWARDED TO THE REGISTER OF DEEDS FOR RECORDING.

COMPARED April 26, 1946
Mayme Jewell Parry DEPUTY AUDITOR GENERAL

Examined and Approved

Mayme Jewell Parry
 Mayme Jewell Parry (Deputy Auditor General)

FILED IN AUDITOR GENERAL'S DEPT.

Mayme Jewell Parry
 Mayme Jewell Parry (Auditor General)

DEDICATION

KNOW ALL MEN BY THESE PRESENTS, that we, Sylvester B. Granger and Josephine Granger, his wife G. Ford Byington and Jewell Byington, his wife Alice L. McDiarmid

as proprietors, have caused the land embraced in the annexed plat to be surveyed, laid out and platted, to be known as CAPITOL VIEW HEIGHTS. Sub-division of the N. W. 1/4 of S. W. 1/4 of S. W. 1/4 of Section 12, T. 4 N. R. 4 W., Oneida Township, Eaton County, Michigan and that the streets and alleys as shown on said plat are hereby dedicated to the use of the public.

Signed and Sealed in the presence of:
Sylvester B. Granger (L.S.)
Josephine Granger (L.S.)
G. Ford Byington (L.S.)
Jewell Byington (L.S.)
Alice L. McDiarmid (L.S.)

ACKNOWLEDGMENT

STATE OF MICHIGAN
 County of Eaton
 on this 9th day of December 1945 before me,

a Notary Public in and for said County, personally came the above named Sylvester B. Granger Josephine Granger G. Ford Byington Jewell Byington Alice L. McDiarmid

known to me to be the persons who executed the above dedication, and acknowledged the same to be their free act and deed.

Harry S. Fawcett
 Notary Public Eaton County
 My Commission expires Sept. 22, 1947

DESCRIPTION OF LAND PLATTED

The land embraced in the annexed plat of CAPITOL VIEW HEIGHTS Subdivision of the N. W. 1/4 of S. W. 1/4 of S. W. 1/4 of Section 12, T. 4 N. R. 4 W., Oneida Township, Eaton County, Michigan is described as follows: Beginning at a point 660 feet North and 50 feet East of the S. W. Corner of Section 12, T. 4 N. R. 4 W., Oneida Township, Eaton County, Michigan; thence N. 1°15' E. 660 feet; S. 88°55' E. 610 feet; S. 1°15' W. 660 feet; N. 88°55' W. 610 feet to the place of beginning.

SURVEYOR'S CERTIFICATE

I hereby certify that the plat hereon delineated is a correct one and that permanent metal monuments consisting of bars not less than one-half inch in diameter and 48 inches in length, or shorter bars of not less than one-half inch in diameter topped over each other at least 6 inches with an over-all length of not less than 48 inches, enclosed in a concrete cylinder at least 4 inches in diameter and 48 inches in depth have been placed at points marked thus (.....) as thereon shown at all angles in the boundaries of the land platted, at all the intersections of streets, intersections of alleys, or of streets and alleys, and at the intersections of streets and alleys with the boundaries of the plat as shown on said plat.

W. J. Arbo
 Registered Land Surveyor (a Professional Engineer)

APPROVAL BY BOARD OF COUNTY ROAD COMMISSIONERS

This plat has been examined and was approved on the 5th day of October 1945 by the Eaton County Board of Road Commissioners:

Edmund T. Miller (Chairman)
James Houston (Member)
O. M. Baker (Member)

APPROVED
Charles M. Zigler
 CHARLES M. ZIGLER
 Notary Public Eaton County, Michigan