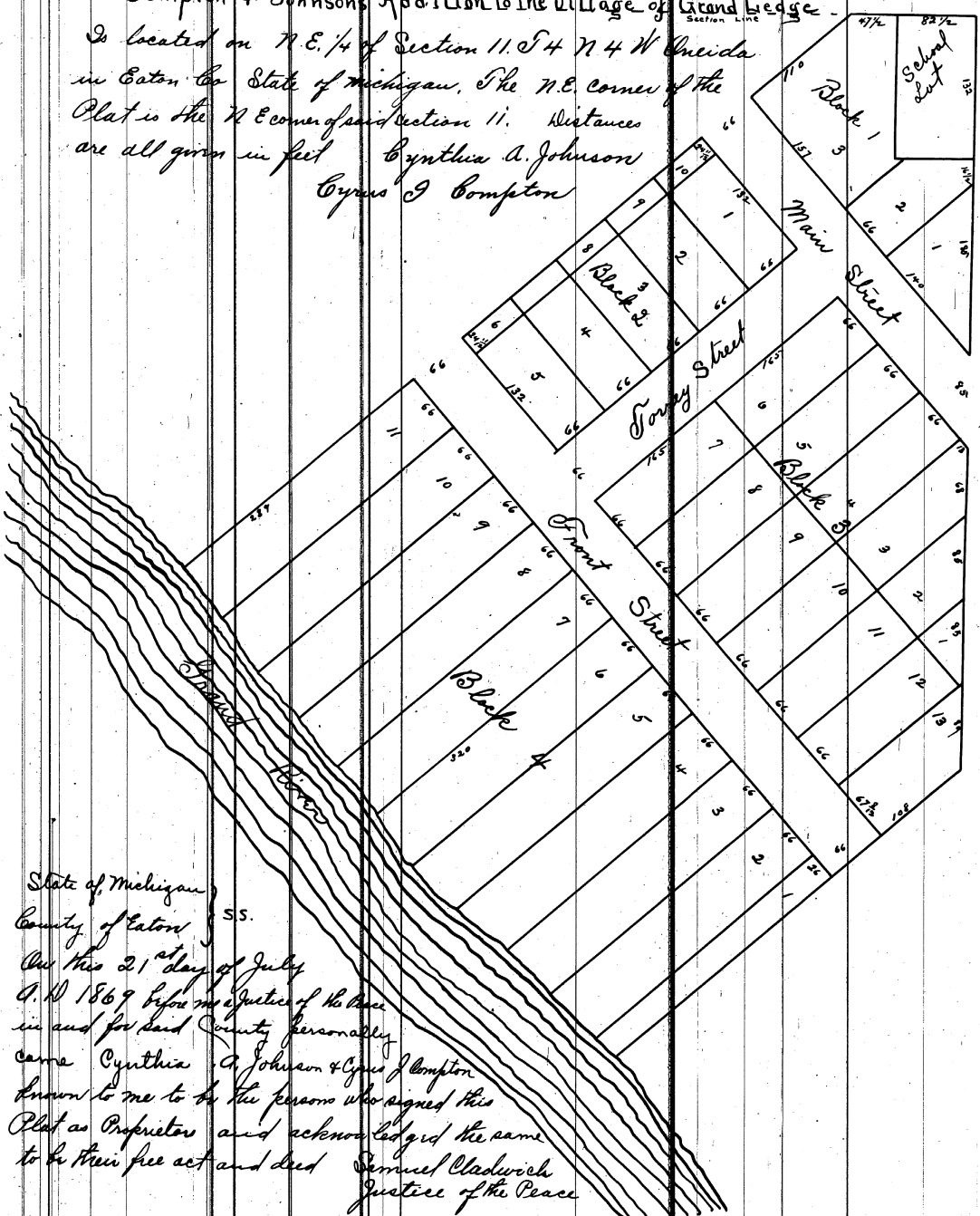


Compton + Johnsons Addition to the Village of Grand Lodge

Is located on N.E. 1/4 of Section 11, T4 N4 W Oneida  
 in Eaton Co State of Michigan. The N.E. corner of the  
 Plat is the N.E. corner of said section 11. Distances  
 are all given in feet Cynthia A. Johnson  
 Cyrus J Compton



State of Michigan }  
 County of Eaton } ss.

On this 21 day of July  
 A. D. 1869 before me Justice of the Peace  
 in and for said County personally  
 came Cynthia A. Johnson & Cyrus J Compton  
 known to me to be the persons who signed this  
 Plat as Proprietors and acknowledged the same  
 to be their free act and deed Samuel Cladwrick  
 Justice of the Peace

Registers Office }  
 Eaton County } The annexed Plat of the Compton + Johnsons Addition to the Village of  
 Grand Lodge was recorded this 24<sup>th</sup> day of July 1869 at 1 O'clock P.M.  
 B. W. Warren Register

I hereby certify that this Plat is a correct copy of the Plat now on Record in the Register  
 of Deeds Office, being made under the supervision of the Auditor General by tracing the  
 Plat on Record and affixing thereto a carefully compared copy of the Certificate.  
 Dated the 22<sup>nd</sup> day of April 1911  
 Alton B. Ford  
 Clerk, and Gen. Deft.