

GLENVIEW SUBDIVISION

SEC II T4N R4W CITY OF GRAND LEDGE
EATON COUNTY MICHIGAN

SCALE 1 INCH = 50 FT
ALL DIMENSIONS ARE GIVEN IN FT AND DECIMALS THEREOF

DESCRIPTION OF LAND PLATTED
The land embraced in the annexed plat of GLENVIEW SUBDIVISION SEC II T4N R4W CITY OF GRAND LEDGE EATON COUNTY MICHIGAN is described as follows; Beginning at a point which bears West along the center of Kent St 792.0 Ft to the west line of Maple St and North 890.15 Ft from the center of Sec 11, Said point of beginning being on the West line of Maple St as now platted - Thence North along the West line of Maple St 534.8 Ft to the South line of Seminary St - Thence N 89° 41' W along the South line of Seminary St 329.0 Ft to the East line of Green St - Thence S 0° 03' W along the East line of Green St 534.0 Ft. - Thence S 89° 33' E 329.4 Ft to beginning. This plat includes a replat of Block 8 and a part of Block 9 South Side Addition to Grand Ledge.

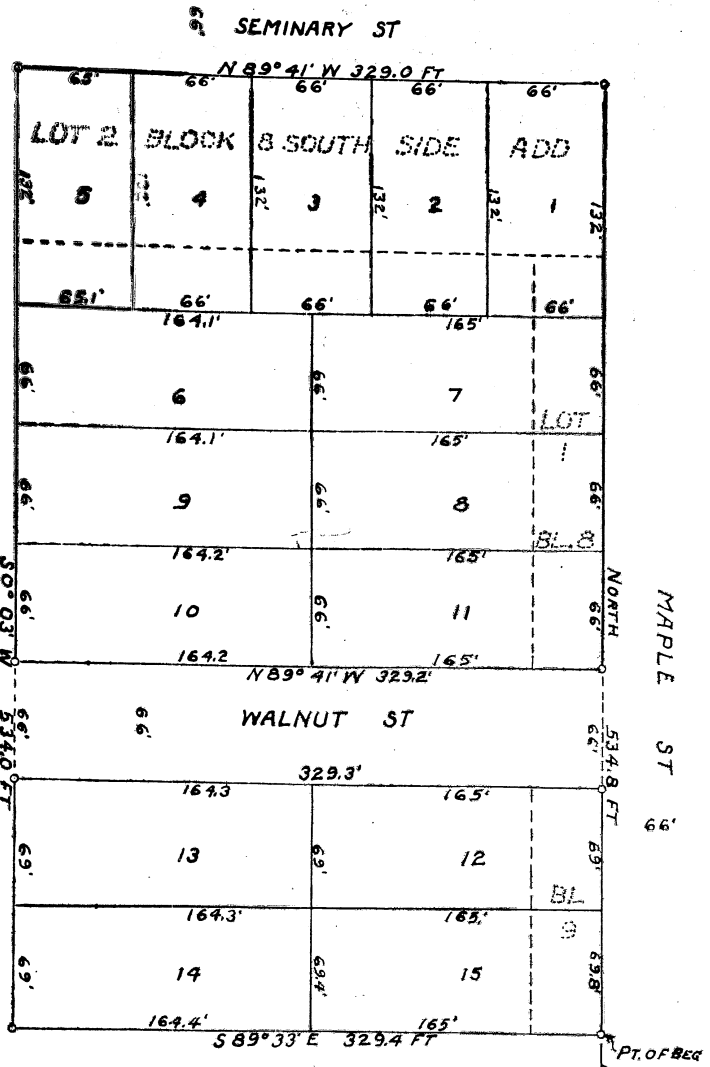
SURVEYORS CERTIFICATE
I hereby certify that the plat hereon delineated is a correct one, and that permanent metal monuments consisting of bars not less than 1/2 inch in diameter and 48 inches in length or shorter bars lapped over each other at least 6 inches with an over all length of not less than 48 inches, encased in a concrete cylinder at least 4 inches in diameter and 48 inches in depth have been placed at points marked thus "o" as shown hereon at all angles in the boundaries of the land platted, at all intersections of streets, intersections of streets and alleys, and intersections of streets and alleys with the boundaries of the land platted.

Carl V. Perry
CARL V. PERRY
REG. CIVIL ENG

DEDICATION
KNOW ALL MEN BY THESE PRESENTS THAT THE CITY OF GRAND LEDGE A MICHIGAN MUNICIPAL CORPORATION, as proprietor by JAMES A CORBETT MAYOR AND FRED E. GUILD CLERK, have caused the land embraced in the annexed plat to be surveyed laid out and platted to be known as GLENVIEW SUBDIVISION SEC II T4N R4W CITY OF GRAND LEDGE EATON COUNTY MICHIGAN and that the streets and alleys as shown on said plat are hereby dedicated to the use of the public.

SIGNED AND SEALED IN THE PRESENCE OF
CITY OF GRAND LEDGE MICHIGAN
Hudson E Demming HUDSON E DEMMING
James A Corbett JAMES A CORBETT MAYOR
Charles C Torrey CHARLES C TORREY
Fred E Guild FRED E GUILD CITY CLERK

STATE OF MICHIGAN }
COUNTY OF EATON }
On this 25th day of May 1953 before me HUDSON E. DEMMING a Notary Public in and for said County personally came JAMES A CORBETT and FRED E. GUILD to me personally known, who each being personally sworn did say that they are the Mayor and Clerk respectively of the city of GRAND LEDGE A MICHIGAN CORPORATION and that the seal affixed to said instrument is the corporate seal of said city, and that the said instrument was signed and sealed in behalf of said city by authority of its common council and the said James A Corbett and Fred E. Guild acknowledged said instrument to be the free act and deed of said city.
HUDSON E. DEMMING



COUNTY TREASURERS CERTIFICATE

OFFICE OF COUNTY TREASURER OF EATON COUNTY; I hereby certify that there are no tax liens or titles held by the state on the lands described hereon, and that there are no tax liens or titles held by individuals on said lands for the five years preceding the 8th day of June 1953 and that the taxes for said period of five years are all paid as shown by the records of this office.

This certificate does not apply to taxes now in process of collection by City collecting officers.

Leonard E. Marshall
LEONARD E. MARSHALL COUNTY TREASURER

This plat was approved by the COMMON COUNCIL OF THE CITY OF GRAND LEDGE at a meeting held May 25th 1953.

Fred E Guild
FRED E GUILD CLERK

This plat was approved on the 8th day of June 1953 by the Eaton County Plat Board.

Tebe Tenan
TEBE TENAN COUNTY CLERK
Tebe Tenan
TEBE TENAN REGISTER OF DEEDS

Leonard E. Marshall
LEONARD E. MARSHALL COUNTY TREASURER

A. J. Bills
A. J. BILLS DRAIN COMMISSIONER

COPY
Register's Office
Eaton County, Michigan
Plat of Glenview Subdivision
City of Grand Ledge
was Recorded this Twenty-fifth day of June A.D. 1953 at 9:30 o'clock
A. M. In Liber. *James A. Corbett* of *Platteau*
on Page *Eighty*
Paul L. Taylor Register of Deeds
Michigan Official Seal

I hereby certify that this copy is a true copy of the map or plat forwarded the Register of Deeds for recording.
Date *June 25, 1953*
Filed in Auditor General's Office
Date *July 1, 1953*
Examined and Approved
Date *June 25, 1953*

John B. Martin
PLAT ENGINEER