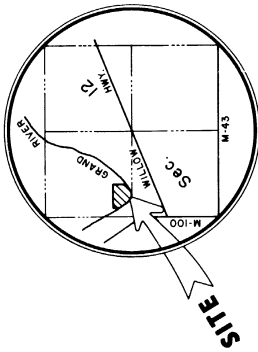


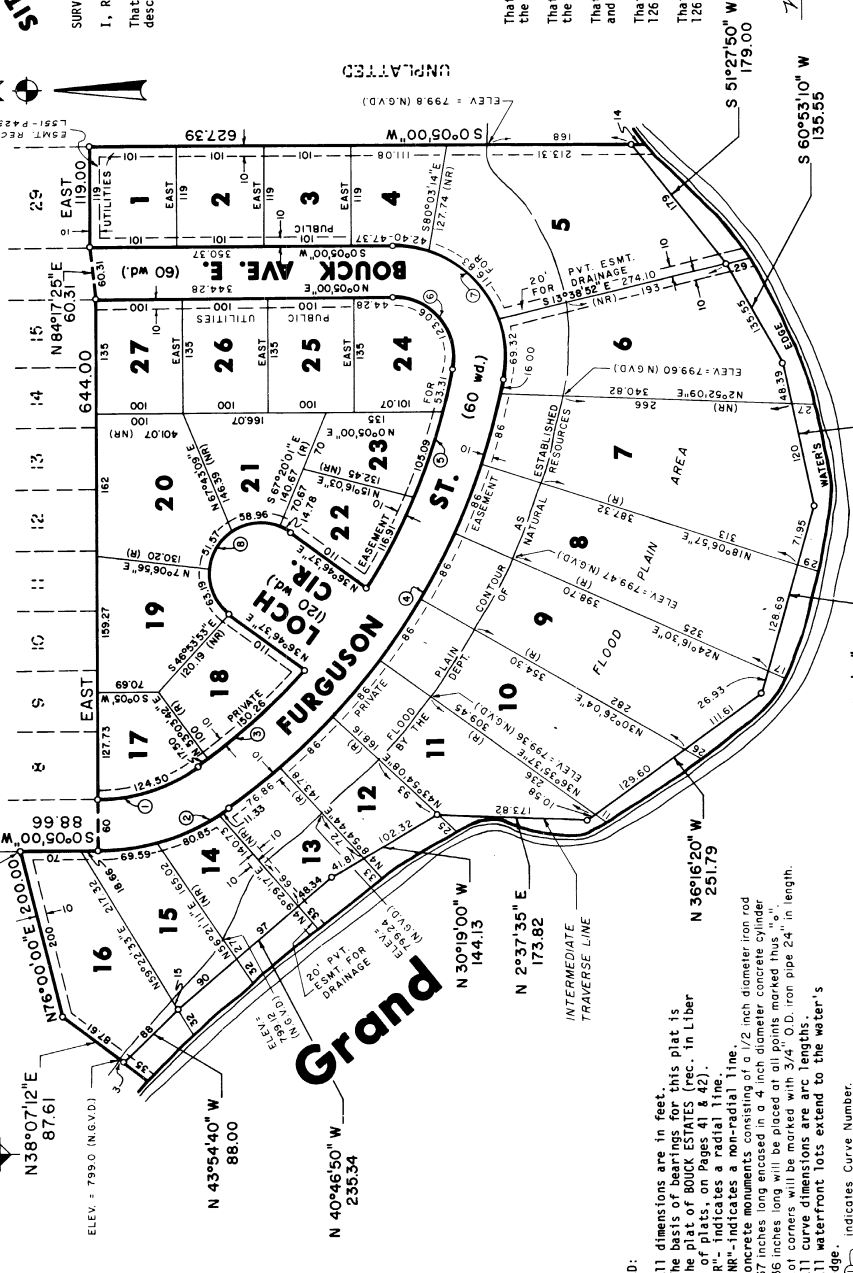
# LOCH LEDGE ESTATES

Part of the N.W. 1/4 of Section 12, T4N, R4W,  
City of Grand Ledge, Eaton County, Michigan.

## VICINITY MAP



BOUCK ESTATES (L.S. P41-42)



CURVE NUMBER	RADIUS	ARC LENGTH	CENTRAL ANGLE	CHORD BEARING	CHORD LENGTH
1	200.00	124.50	35°40'00"	S 17°45'00" E	122.50
2	200.00	161.85	35°40'00"	S 17°45'00" E	159.25
3	740.00	167.76	12°59'22"	S 42°04'41" E	167.41
4	800.00	608.86	4°36'22"	S 57°23'11" E	594.27
5	740.00	275.31	21°18'57"	S 68°31'53" E	273.72
6	700.00	123.06	100°43'36"	S 50°26'49" W	107.81
7	130.00	228.55	100°43'36"	S 50°26'49" W	200.23
8	60.00	188.50	180°00'00"	S 53°13'24" E	120.00

**LEGEND:**

- 1) All dimensions are in feet.
- 2) The basis of bearings for this plat is the plat of BOUCK ESTATES (rec. in Liber 6 of Plats, on Pages 41 & 42).
- 3) "R" - Indicates a radial line.
- 4) "NK" - Indicates a non-redirect line.
- 5) Corners will be marked with 3/4" O.D. iron pipe 24" in length.
- 6) Lot corners will be placed at all points marked thus "a".
- 7) All curve dimensions are arc lengths.
- 8) All waterfront lots extend to the water's edge.
- 9) "C" indicates Curve Number.

**SURVEYOR'S CERTIFICATE**

I, Richard W. Steadman, Surveyor, certify:  
That I have surveyed, divided and mapped the land shown on this plat, described as follows:

LOCH LEDGE ESTATES, part of the NW 1/4 of Section 12, T4N, R4W, City of Grand Ledge, Eaton County, Michigan, described as follows:  
Commencing at the NW corner of said Section 12; thence S 0°05' W 1136 feet along the West line of said Section 12 to the East line of Fleming Street; thence S 0°05' W 337.34 feet along Fleming Street; thence S 0°05' W 337.34 feet along said West line to a point of beginning; thence continuing along said West line, S 0°05' W 88.66 feet to the SW corner of the plat of BOUCK ESTATES (rec. in Liber 6 of Plats, on Pages 41 & 42); thence EAST 644 feet along the South line of Lots 8 through 15 of said Plat to the West line of Bouck Avenue East; thence N 84°17'25" E 60.31 feet to the SW corner of Lot 29 of said Plat; thence EAST 119 feet to the SE corner of said lot; thence S 0°05' W 627.39 feet; thence S 0°05' W 176.50 feet; thence S 0°05' W 135.25 feet; thence S 77°45'10" W 176.50 feet; thence S 60°53'10" W 135.25 feet; thence S 77°45'10" W 168.39 feet; thence N 73°52'10" W 227.57 feet; thence N 36°16'20" W 251.79 feet; thence N 23°37'35" E 173.82 feet; thence N 30°19'00" W 144.13 feet; thence N 40°46'50" W 235.34 feet; thence N 43°54'40" W 88 feet; thence N 38°07'12" E 87.61 feet; thence N 76°00'00" E 200 feet to the point of beginning; containing 16.081 acres, more or less, including the lands lying between the traverse line and the water's edge; also containing 27 lots, numbered 1 through 27, inclusive.

That I have made such survey, land-division and plat by the direction of the owners of such land.

That such plat is a correct representation of all exterior boundaries of the land surveyed and the subdivision of it.

That surety has been deposited to insure the installation of the monuments and lot markers required by Section 125 of the Act.

That the accuracy of the survey is within the limits required by Section 126 of the Act.

That the bearings shown on the plat are expressed as required by Section 126(3) of the Act and as explained in the legend.

R.W. STEADMAN & ASSOCIATES, INC.  
3000 W. St. Joseph St.  
Lansing, MI 48917

*Richard W. Steadman*  
Richard W. Steadman, President  
Registered Land Surveyor No. 11370

May 14, 1986



This plat is subject to restrictions as required by Act 288 of 1967 as amended on certain lots with respect to the requirements of the Michigan Department of Natural Resources and/or the Michigan Department of Public Health, which are records in Liber \_\_\_\_\_, Page \_\_\_\_\_ of records of this county.

# LOCH LEDGE ESTATES

Part of the N.W. 1/4 of Section 12, T4N, R4W,  
City of Grand Ledge, Eaton County, Michigan.

### PROPRIETOR'S CERTIFICATE

We, as proprietors, certify that we caused the land embraced in this plat to be surveyed, divided, mapped and dedicated as represented on this plat and that the Street, Circle and Avenue are for the use of the public; that the public utility easements are private easements and that all other easements are for the use shown on the plat; and that all waterfront lots extend to the water's edge, subject to the navigable rights of the other riparian owners and the public trust in these waters.

### WITNESSES:

Erdmen T. Mackenzie  
Erdmen T. Mackenzie  
4248 W. Saginaw Hwy.  
Grand Ledge MI 48837

Corelia J. Sobin  
Corelia J. Sobin

Karen S. Mackenzie  
Karen S. Mackenzie  
4248 W. Saginaw Hwy.  
Grand Ledge MI 48837

David P. Arsenault  
David P. Arsenault

### ACKNOWLEDGEMENT

State of Michigan  
Eaton County

Personally came before me this 15 day of April, 1986, Erdmen T. Mackenzie and Karen S. Mackenzie, his wife, to whom he has the right to marry, and executed the foregoing instrument, and acknowledged that they executed the same as their free act and deed.

My commission expires

April 25, 1990

Elizabeth Brandon  
Elizabeth Brandon  
Notary Public,  
Eaton County,  
Michigan.

### CERTIFICATE OF PLANNING COMMISSION

I certify that this plat was approved by the Planning Commission of the City of Grand Ledge at a meeting held 6-12-86

Elizabeth Brandon  
Elizabeth Brandon, Chairperson

### COUNTY TREASURER'S CERTIFICATE

The records in my office show no unpaid taxes or special assessments for the five years preceding May 15, 1986 involving the lands included in this plat.

Alvin Starr  
Alvin Starr  
Eaton County Treasurer

### COUNTY DRAIN COMMISSIONER'S CERTIFICATE

Approved on May 14, 1986 as complying with Section 192 of Act 288 P.A. of 1967 and the applicable rules and regulations published by my office in the County of Eaton.

Shirley Brannan  
Shirley Brannan  
Deputy Eaton County Drain Commissioner

### COUNTY PLAT BOARD CERTIFICATE

This plat has been reviewed and is approved by the Eaton County Plat Board on July 1, 1986 as being in compliance with all of the provisions of Act 288, P.A. of 1967, and the Plat Board's applicable rules and regulations.

Leiford M. Peters  
Leiford M. Peters  
Chairman, Board of Commissioners

Linda Twitchell  
Linda Twitchell,  
Register of Deeds and County Clerk

Alvin Starr  
Alvin Starr  
County Treasurer

### RECORDING CERTIFICATE

STATE OF MICHIGAN  
Eaton County

This plat was received for record on the 1 day of July, 1986 A. D. at Grand Ledge, and recorded in Liber 11370 of Plats on Pages 1-2.

Sylvia Williams  
Sylvia Williams  
Deputy Register of Deeds



Richard M. Steadman  
Richard M. Steadman,  
Registered Land Surveyor,  
No. 11370

### CERTIFICATE OF MUNICIPAL APPROVAL

I certify that this plat was approved by the City Council of the City of Grand Ledge at a meeting held June 23, 1986 and was reviewed and found to be in compliance with Act 288, P.A. of 1967. That surety has been posted to insure the installation of public sewer and water services, and that the City of Grand Ledge has adopted a subdivision control and zoning ordinance, and waives the minimum lot size specified in the Act. Also, that surety has been posted to insure the installation of the monuments and lot markers within a period of one year from the above approval date.

Frances Reihmer  
Frances Reihmer, Clerk  
City of Grand Ledge