

7064-

190  
190  
190  
190  
190

**Eaton County I Surveyor's Certificate**  
(Required by Section 135, Act 66, Laws of 1907)

This is to Certify, That for FIVE YEARS prior to the date hereof, there are no Tax Liens or Titles held by the State or any individual, nor any unpaid taxes on lands described in the annexed instrument bearing Treasurer's No. 7116 as appear by the records of this office, except as stated.

Aug 27-1909 *Edmund Clark*  
Charlotte, Mich. *Wm. Southworth*



# RIVER VIEW PARK



BEING AN EXTENSION OF BLOCK TWO

Scale 66' one inch

## INGERSOLLS ADDITION TO GRAND LEDGE

The land embraced in the annexed plat of Mudge's River View Park is described as follows: Commencing on the N. 3/4 1/4 of Sec. 2, T. 4 N. R. 4 W. 23rd feet from the N.W. Cor. of block 2, Ingersoll's Addition to Grand Ledge, thence S. on said 1/4 line 112 feet, thence S. 73° 26' E. 172 feet, thence S. 67° 36' E. 357 1/2 feet, thence 32° 34' E. 150 feet, thence North 217 1/2 feet West 132 feet, thence N. 75° 21' W. 501 1/2 to place of beginning.

**Certificate**  
I hereby certify that the plat hereon delineated is a correct one, and that permanent measurements consisting of 3/4 inch gas pipe have been planted at points marked thus: (C) as shown thereon, at all angles in the boundaries of the land platted and at all intersections of streets or streets and alleys

W.D. Southworth  
Surveyor

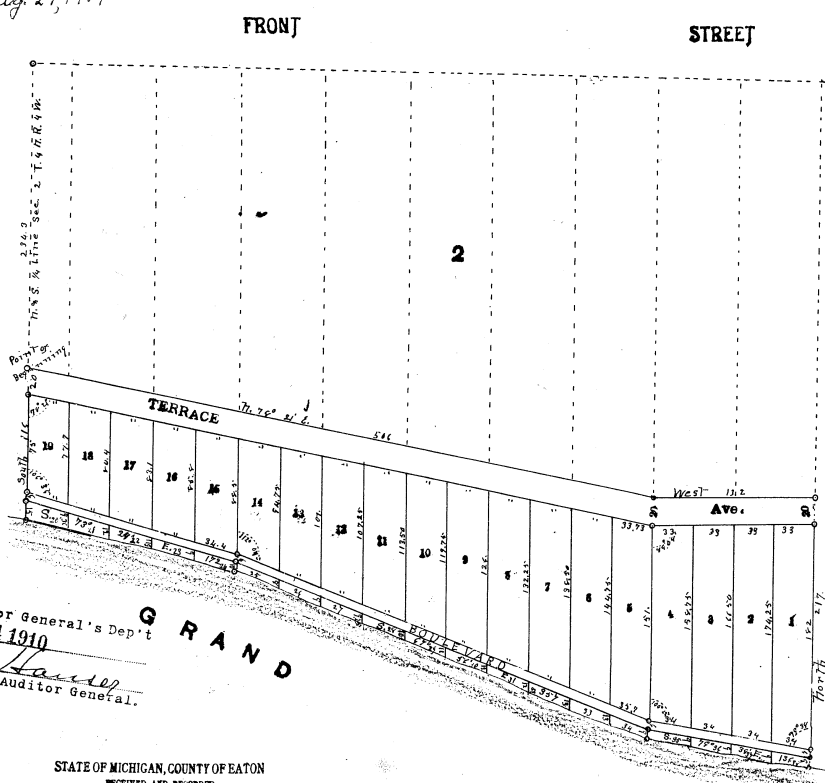
Examined and Approved  
August 25-1909  
*William Livingston*  
Deputy Auditor General

**Dedication**  
Know all men by these presents: That we J. Scott Mudge & Elizabeth Mudge, his wife as proprietors have caused the land embraced in the annexed plat to be surveyed laid out and platted to be known as Mudge's River View Park and that the streets alleys and ways hereby dedicated to the use of the public.

Signed in presence of *J. Scott Mudge* (L.S.)  
*John E. Wing*  
*John L. Jarman*  
*Elizabeth Mudge* (L.S.)

State of Michigan } ss.  
County of Eaton } ss.  
On this 16th day of Aug. 1909 before me a Notary Public in and for said county personally came the above mentioned J. Scott Mudge and Elizabeth Mudge his wife known to me to be the persons who executed the above dedication and acknowledged the same to be their free act and deed  
*J. McEwing* Notary Public  
com Expires Sept 17th 1912

Treasurer Certificate  
No. 727, Aug 27, 1909



State of Michigan } ss.  
County of Eaton } ss.  
We A. M. Barber Register of Deeds and W.D. Southworth Surveyor, hereby certify that we have each carefully compared this copy with the original plat of Mudge's River View Park and that it is an exact copy thereof and of the whole of such original map or plat.  
*A. M. Barber* Register of Deeds  
*W.D. Southworth* Surveyor

State of Michigan } ss.  
County of Eaton } ss.  
We A. M. Barber Register of Deeds, and W.D. Southworth Surveyor, hereby certify that we have each carefully compared the annexed copy with the plat of Mudge's River View Park now of record in the office of said Register of Deeds, and that it is a true transcript therefrom and of the whole of such record

*A. M. Barber* Register of Deeds  
*W.D. Southworth* Surveyor  
Chamber of Common Council  
City of Grand Ledge  
Examined and approved  
this 16th Day of Aug. 1909  
*Wm. H. Apple*  
Clerk

Filed in Auditor General's Dept  
MAR 24 1910  
*Geo. L. Sawyer*  
Deputy Auditor General.

STATE OF MICHIGAN, COUNTY OF EATON  
RECEIVED AND RECORDED  
August 27, A. D., 1909  
*A. M. Barber*  
Register of Deeds

County Treasurer for RIVER  
certificate in accordance  
with Section 135 of Public Acts  
of 1894 of the laws of 1895 has  
been furnished  
*Albert M. Barber*  
Register of Deeds