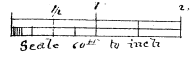


N
E
W
T
O
W
N
S
I
N
T
H
E
C
I
T
Y
O
F
D
E
T
R
O
I
T

BLOCKS 60 & 61

Inside Corporate Limits See City Order # 40217. 12/16/98



C H A N D L E R S

Description of land platted
The land embraced in the annexed plat of Newton's Addition to Blocks 60 & 61 of Grand Teton Co. is described as follows: Commencing 100 ft. N. and 200 ft. W. of S.E. corner of the W. 1/4 of N.E. 1/4 Sec. 10, T. 4 N., R. 4 W., 2nd Mer. N. 89° 52' 25" E. 200 ft. to S. 15° 10' 25" W. 200 ft. to S. 89° 02' 25" W. to place of beginning.

Surveyors certificate
I hereby certify that the plat shown exhibited is a correct one and that permanent monuments consisting of 2 inch iron pins have been planted at all points marked thereon as shown thereon, at all angles in the boundaries of the land platted and at all intersections of streets or alleys.

Dedication
Know all men by these presents that we Robert L. Newton, Mary E. Newton and wife, do hereby dedicate to the public use as a public highway the land embraced in the annexed plat to be surveyed, laid out and platted to be known as Newton's Addition to Blocks 60 & 61 Grand Teton Co. and that the streets and alleys shown on said plat are hereby dedicated to the use of the public.
Witness my hand and seal this 10th day of August 1893.
Robert L. Newton
Mary E. Newton
Wm. H. McRoberts
Jennie McRoberts

State of Michigan ss
County of Eaton
In their 25th day of Aug. 1893 before me a Notary Public in and for said County personally came the above named Robert L. Newton, Mary E. Newton his wife and Wm. H. McRoberts & Jennie McRoberts his wife known to me to be the persons who executed the above dedication and acknowledge the same to be their free act and deed.
David G. Kennedy
Notary Public

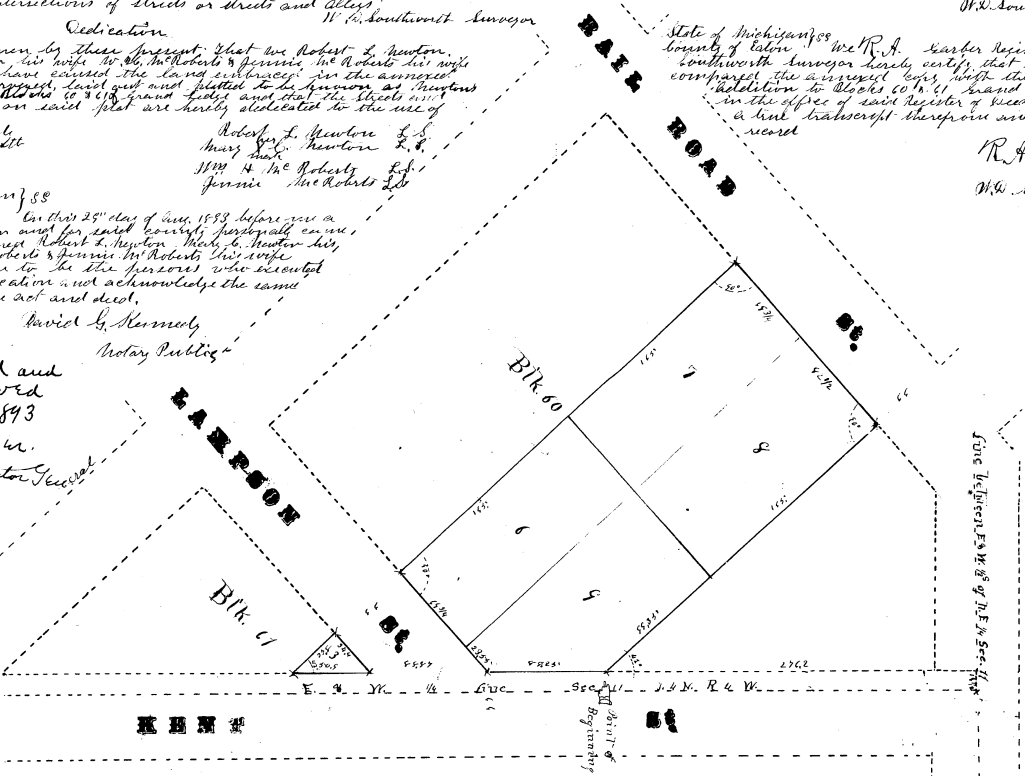
Examined and approved
Sept. 9, 1893
D. B. Clapp
Deputy Auditor General

State of Michigan ss
County of Eaton
We R. A. Barber Register of Deeds and W. D. Southworth Surveyor hereby certify that we have each carefully compared this copy with the original plat of Newton's Addition to Blocks 60 & 61 Grand Teton Co. and that it is an exact copy thereof and of the whole of each original map or plat.

R. A. Barber Register of Deeds
W. D. Southworth Surveyor

State of Michigan ss
County of Eaton
We R. A. Barber Register of Deeds and W. D. Southworth Surveyor hereby certify that we have each compared the annexed copy with the plat of Newton's Addition to Blocks 60 & 61 Grand Teton Co. now of record in the office of said Register of Deeds and that it is a true transcript thereof and of the whole of each record.

R. A. Barber Register of Deeds
W. D. Southworth Surveyor



Examination of Commission - forward
City of Grand Teton
Examined and approved
1893
City Clerk
W. D. Southworth
Surveyor

RECORDED AND FILED
IN THE REGISTER'S OFFICE
Oct 28 1893
D. B. Clapp
Deputy Auditor General

DES
The land
next plat
on the NE
is described
it W of the
the N 51st
ce S 59-50 W 4
49 1/2 ft to PL
All dist
actions of
DED
Know all
That we A
Russell, C
Isadore Rus
ene, G. Rus
and Elino
braced in the
laid out and
sells subdivi
to T. 4 N. R. 4 W.
as shown on st
the use of th
SIGNED AND
Car
John
PICKS