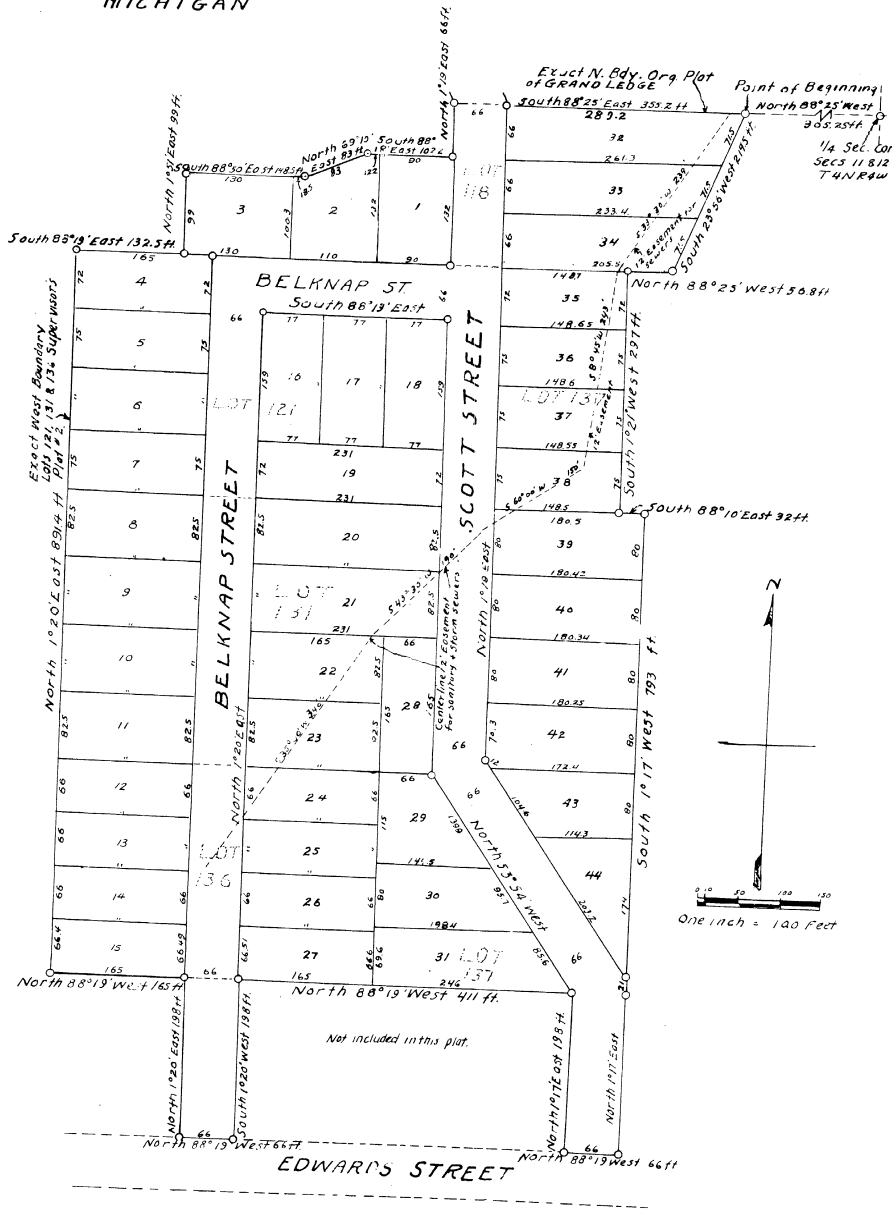


PLEASANT VIEW
SEC. 11 T4N R4W
CITY OF GRAND LEDGE
EATON COUNTY
MICHIGAN



DEDICATION

KNOW ALL MEN BY THESE PRESENTS, that we, Ira W. Howe as proprietor and Maude Howe, his wife, as proprietors, have caused the land embraced in the annexed plat to be surveyed, and the same plat, to be known as PLEASANT VIEW, Sec. 11, T4N, R4W, City of Grand Ledge, Eaton County, Michigan, and that the streets as shown on said plat are hereby dedicated to the use of the public.

In Presence of
Hudson E. Deming, Ira W. Howe (I.S.)
Maude M. Edwards, Maude Howe (I.S.)
Hudson E. Deming (Witness)
Maude M. Edwards (Witness)

ACKNOWLEDGMENT

STATE OF MICHIGAN
County of Eaton
On this 19th day of November, 1914, before me, a Notary Public in and for said County, personally came the above named Ira W. Howe and Maude Howe, his wife, known to me to be the persons who executed the above dedication, and acknowledged the same to be their free act and deed.
Hudson E. Deming, Notary Public, Eaton County
My Commission expires March 21, 1915.

DESCRIPTION OF LAND PLATTED

The land embraced in the annexed plat of PLEASANT VIEW, Sec. 11, T4N, R4W, City of Grand Ledge, Eaton County, Michigan, is a replat of a portion of Supervisors plat No. 2, of Grand Ledge, Michigan, is described as follows:
Commencing at a point which is North 88°25' West 305.25 feet of the 1/4 Sec. Cor. of Secs. 11 and 12, T4N, R4W, City of Grand Ledge, Eaton County, Michigan; thence South 23°56' West 214.5 feet; thence North 88°25' West 56.8 feet; thence South 1°21' West 297 feet; thence South 88°10' East 32 feet; thence South 1°17' West 793 feet; thence North 88°19' West 86 feet; thence North 1°17' East 198 feet; thence North 88°19' West 411 feet; thence South 1°20' West 198 feet; thence North 88°19' West 66 feet; thence North 1°20' East 198 feet; thence North 88°19' West 165 feet; thence North 1°20' East 891.4 feet; thence South 88°19' East 132.5 feet thence North 1°51' East 99 feet; thence South 88°50' East 148.5 feet, thence North 69°10' East 83 feet; thence South 88°18' East 102.2 feet; thence North 1°19' East 66 feet; thence South 88°25' East 355.2 feet to the place of beginning.
All dimensions are in feet or decimals thereof.
This plat contains 44 lots.

MUNICIPAL APPROVAL

This plat was approved by the Common Council of the City of Grand Ledge at a meeting held November 27, 1914.
Fred E. Guild (Clerk)

APPROVAL BY COUNTY PLAT BOARD

This plat was approved on the 20th day of December, 1914, by the County Plat Board.
James W. Sanders, Chairman Dd. of Supervisors
Tebé Terman, County Register of Deeds
Leonard E. Marshall, County Treasurer
A. J. Bills, County Drain Commissioner

SURVEYOR'S CERTIFICATE

I hereby certify that the plat hereon delineated is a correct one and that permanent metal monuments consisting of bars not less than one-half inch in diameter and 48 inches in length, or shorter bars of not less than one-half inch in diameter lapped over each other at least 6 inches with an overall length of not less than 48 inches, encased in a concrete cylinder of at least 4 inches in diameter and 48 inches in depth have been placed at points marked thus (.....) as thereon shown at all angles in the boundaries of the land platted, at all the intersections of streets, intersections of alleys, or of streets and alleys, and at the intersections of streets and alleys with the boundaries of the plat as shown on said plat.

Leslie H. Belknap, Registered Professional Engineer

COUNTY TREASURER'S CERTIFICATE

Office of County Treasurer, Eaton County.
I hereby certify, that there are no tax liens or titles held by the State on the lands described hereon, and that there are no tax liens or titles held by individuals on said lands, for the five years preceding the 19th day of November, 1914, and that the taxes for said period of five years are all paid, as shown by the records of this office.
This certificate does not apply to taxes, if any, now in process of collection by township, city or village collecting officers.
Leonard E. Marshall, County Treasurer