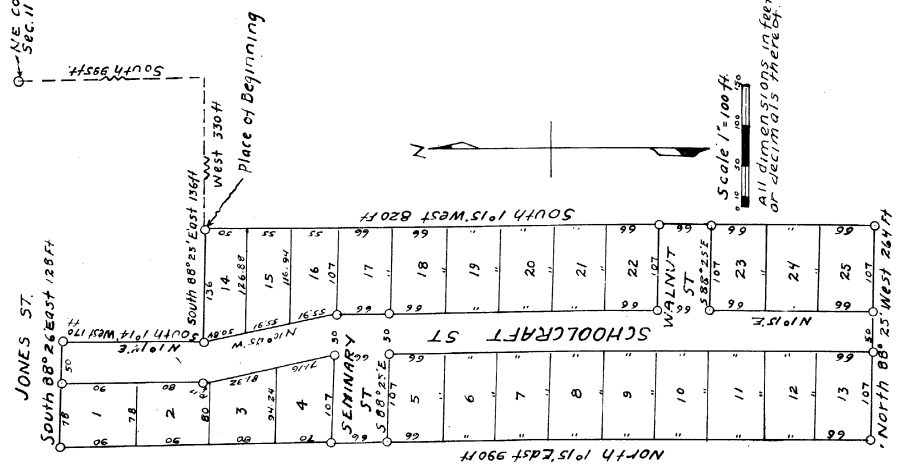


PLAT OF
SCHOOLCRAFT
 SEC 11 T4NR4W
 CITY OF GRANDLEDGE
 EATON COUNTY, MICH.

NE COR. of W 1/2 of NW 1/4
 Sec. 11 T4N. R4W



DEDICATION
 KNOW ALL MEN BY THESE PRESENTS, that **I, Farnam Lawson**, Bachelor,
 as proprietor, have caused the land embraced in the annexed plat to be surveyed,
 laid out and platted, to be known as, **Plat of Schoolcraft, Sec. 11,
 T. 4 N., R. 4 W., City of Grand Ledge, Eaton County, Michigan**

and that the streets and alleys as shown on said plat are hereby dedicated to the use of the public.
 Signed and Sealed in the presence of
George Eugene Farnam Lawson (S.S.)
George Eugene Farnam Lawson
Edwin Farnam Lawson
Edwin Farnam Lawson
 (Witness)

ACKNOWLEDGMENT

STATE OF MICHIGAN }
 County of Eaton } ss.
 On this 10th day of August, 1954, before me,
 a Notary Public in and for said County, personally came the above named
Farnam Lawson
 known to me to be the person who executed the above dedication, and acknowledged
 the same to be free and voluntary, and
 his
Edwin Farnam Lawson
 Notary Public, Eaton County
 My Commission expires March 26, 1955

DESCRIPTION OF LAND PLATED

The land embraced in the annexed plat of **SCHOOLCRAFT, Sec. 11, T. 4 N., R. 4 W., City of Grand Ledge, Eaton County, Michigan**, is described as follows:
 Beginning at a point 985 feet South and 330 feet West of the N.E. corner of the West 1/2 of the N.W. 1/4, Sec. 11, T4N., R4W., City of Grand Ledge, Eaton County, Michigan, thence South 1°15' West 820 feet; thence North 88°25' West 264 feet; thence North 1°15' East 990 feet; thence South 88°26' East 128 feet; thence South 1°14' W 170 feet; thence South 88°25' East 136 feet to the Place of Beginning.

SURVEYOR'S CERTIFICATE

I hereby certify that the plat herein delineated is a correct one and that permanent metal monuments consisting of bars not less than one-half inch in diameter and 48 inches in length, or shorter bars of not less than one-half inch in diameter, spaced over such other of least 6 inches with an overall length of not less than 48 inches, enclosed in a concrete cylinder of least 4 inches in diameter and 48 inches in length have been placed in accordance with the plat as shown shown or all angles in the boundaries of the streets and alleys, and at the intersections of streets and alleys with the boundaries of the plat as shown on said plat.

Leslie H. Bellnap
 Leslie H. Bellnap
 Registered Professional Engineer

MUNICIPAL APPROVAL

This plat was approved by the Common Council of the City of Grand Ledge at a meeting held August 10, 1954 at Grand Ledge, Michigan.
Frederic Guid
 (Clk)

APPROVAL BY COUNTY PLAT BOARD

This plat was approved on the 10th day of August, 1954, by the Eaton County Plat Board.
Lebe Tennan (County Register of Deeds)
Lebe Tennan (County Clerk)
Leonard E. Marshall (County Treasurer)
A. J. Bills (County Drain Commissioner)

COUNTY TREASURERS CERTIFICATE

Office of County Treasurer, Eaton County.
 I hereby certify that there are no tax liens or rates held by the State on the land described herein, and that there are no tax liens or rates held by individuals on said lands, for the five years preceding the 10th day of August, 1954, and that the taxes for said period of five years are all paid, as shown by the records of this office.
 This certificate does not apply to taxes, if any, now in process of collection by township, city or village collecting officers.
Leonard E. Marshall
 Leonard E. Marshall
 County Treasurer

Register's Office
 City of Grand Ledge
 Plat of Schoolcraft
 Sec. 11, T. 4 N., R. 4 W.
 Page 1 of 1
 This plat was recorded on the 10th day of August, 1954, at Grand Ledge, Michigan.
 Date
 Filed
 Recorded
 Examined
Frederic Guid
 (Clk)