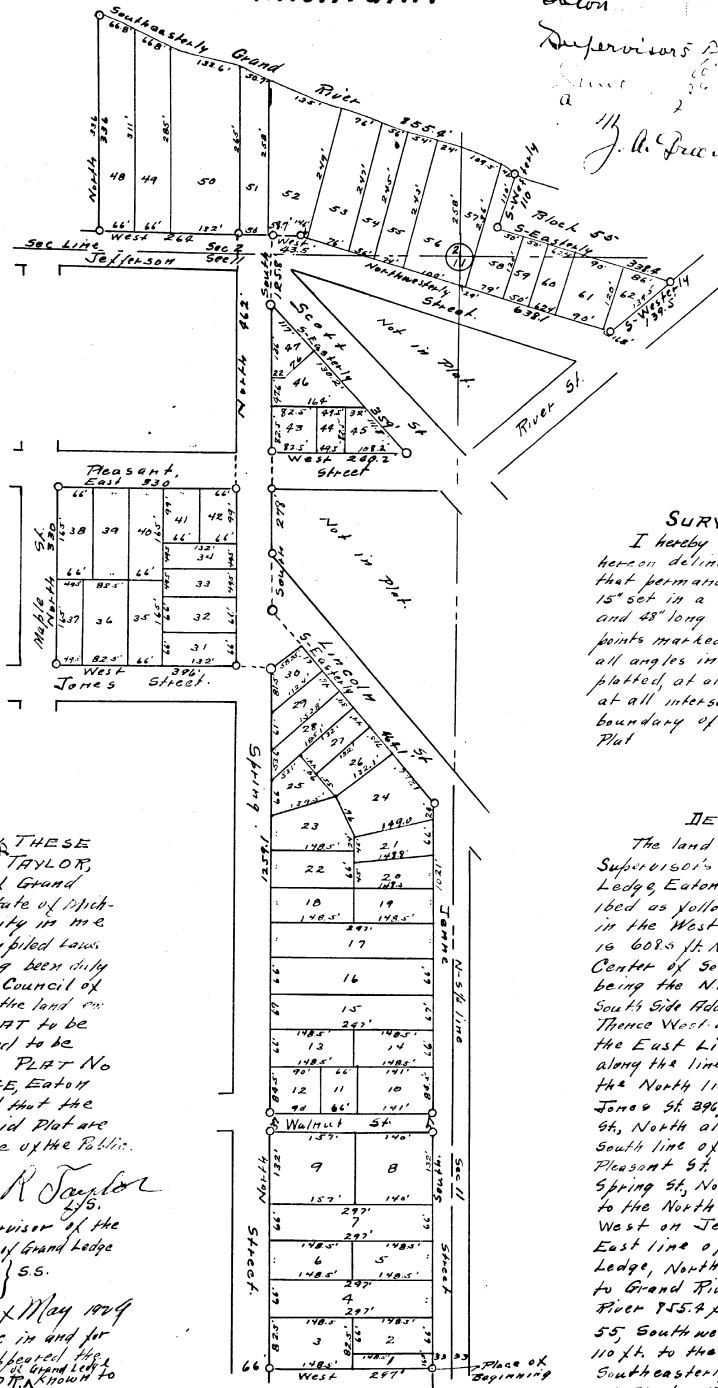
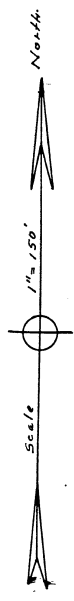


June 5, 1929
L. L. Haines

SUPERVISOR'S PLAT No 1 CITY OF GRAND LEDGE EATON COUNTY

MICHIGAN



SURVEYOR'S CERTIFICATE
I hereby certify that the PLAT hereon delineated is a correct one and that permanent metal monuments 1x15" set in a concrete base 4" in diameter and 48" long have been planted at all points marked thus "O" as shown shown at all angles in the boundary of the land platted, at all Street intersections, and at all intersections of Streets with the boundary of the Plat as shown on said Plat
R. J. Rabb, Jr.
Registered Surveyor

DESCRIPTION
The land embraced in the annexed Supervisor's Plat No 1 City of Grand Ledge, Eaton County, Michigan, is described as follows: - Beginning at a point in the West line of Jones Street that is 608 1/2 ft. North and 33 ft. West of the Center of Sec. 11 T4N R4W said point being the N.E. corner of Lot 3, Block 1 of South Side Add to the City of Grand Ledge Thence West along the Lot line 297 ft. to the East line of Spring Street, North along the line of Spring Street 125.8 ft. to the North line of Jones St., West on Jones St. 296 ft. to the East line of Maple St., North along Maple St. 330 ft. to the South line of Pleasant St., East along Pleasant St. 330 ft. to the West line of Spring St., North on Spring St. 462 ft. to the North line of Jefferson St., West on Jefferson St. 264.0 ft. to the East line of Riverside Add. to Grand Ledge, North on the Plat line 336 ft. to Grand River, Southeastern along the River 75.4 ft. to the N.W. cor. of Block 55, Southwesterly along the Block line 110 ft. to the South line of Block 55, Southeastern along the South line of Block 55, 338.4 ft. to River St., Southwesterly along River St., 139.5 ft. to the North line of Jefferson St., Northwesterly along Jefferson St. 638.1 ft. to an angle, West along Jefferson St. 43.5 ft. to the East side of Spring St., South 125.8 ft., Southeastern along South St. 35.9 ft. to Pleasant St., West on Pleasant St. 240.2 ft. to the East line of Spring St., South on Spring St. 278 ft. to the South line of Lincoln St., Southeastern 96.1 ft. along Lincoln St. to the West line of Jones St., South

DEDICATION.
KNOW ALL MEN BY THESE PRESENTS: THAT I, ELI TAYLOR, Supervisor of the City of Grand Ledge, of Eaton County State of Michigan, by virtue of authority in me vested by Section 3350 Compiled Laws of 1915 as amended, having been duly authorized by the Common Council of Grand Ledge, have caused the land embraced in the annexed PLAT to be surveyed, laid out and platted to be known as "SUPERVISOR'S PLAT No 1, CITY OF GRAND LEDGE, EATON COUNTY, MICHIGAN, and that the Streets as shown on said Plat are hereby dedicated to the use of the Public.

Witness my hand and seal this 13th day of May 1929
Eli Taylor
Supervisor of the City of Grand Ledge

STATE OF MICHIGAN } ss.
COUNTY OF Eaton }
On this 13th day of May 1929 before me a Notary Public in and for said County personally appeared the above named ELI TAYLOR, known to me to be the person who executed the above dedication and acknowledged the same to be his free act and deed as such Supervisor.

H. C. ... Notary Public Eaton Co., Mich
My Com Exp. Apr 20-1931

This Plat was approved this 3rd day of Decr 1929
C. A. ... Judge of Probate
Wm H. ... County Treasurer
This Plat was approved by the Common Council of Grand Ledge this 13th day of May 1929

R. J. Rabb, Jr. City Clerk.