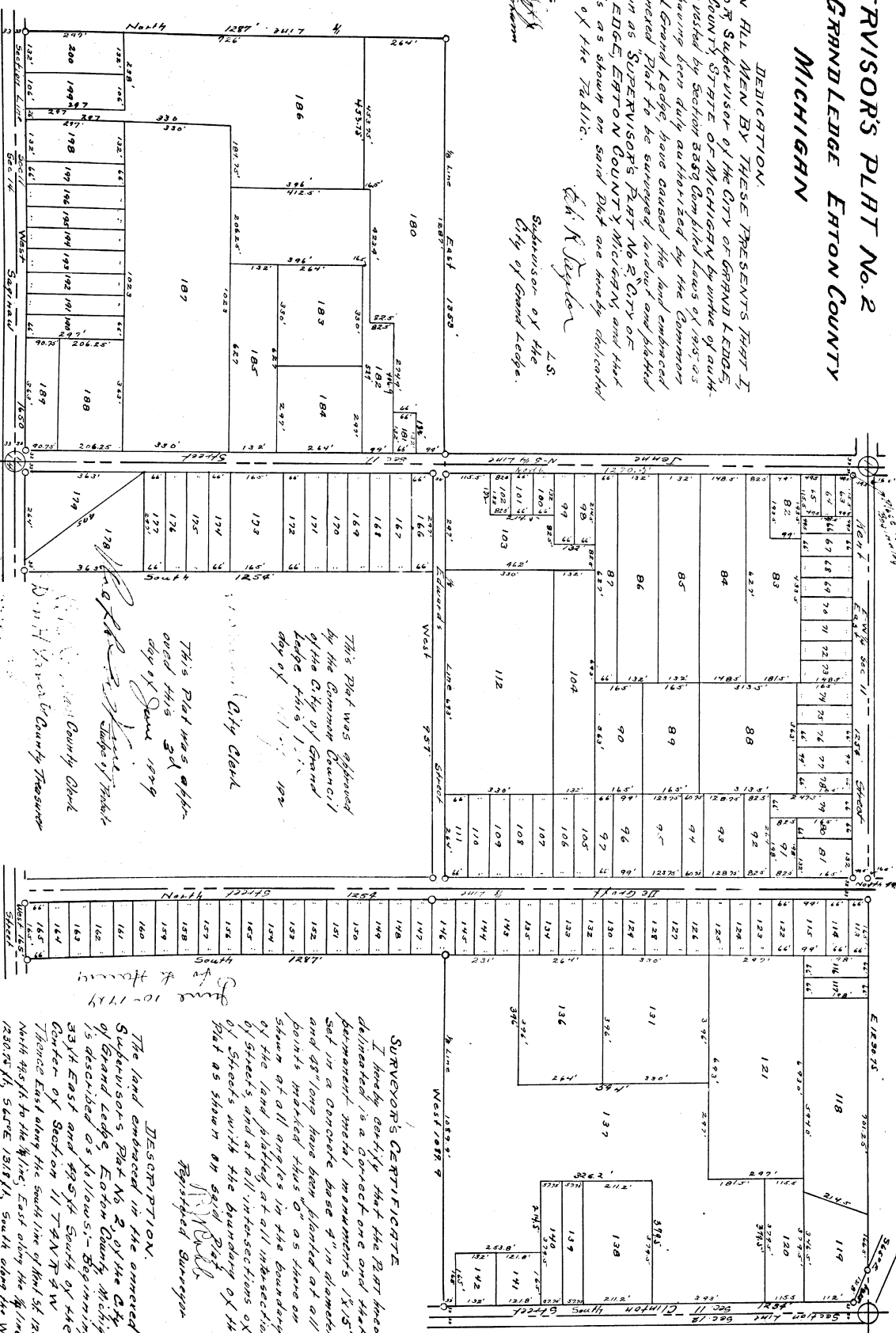
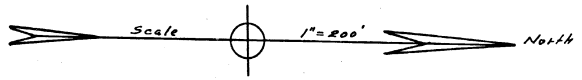


# SUPERVISOR'S PLAT No. 2 CITY OF GRANDLEDGE ETON COUNTY MICHIGAN

**DEDICATION.**  
KNOW ALL MEN BY THESE PRESENTS THAT I, ELI TRAYLOR, Supervisor of the City of Grand Ledge, Eton County, State of Michigan, by virtue of authority in me vested by Section 3549 Compiled Laws of 1905 as amended having been duly authorized by the Common Council of Grand Ledge, have caused the land embraced in the annexed plat to be surveyed, divided and platted to be known as SUPERVISOR'S PLAT No. 2, CITY OF GRANDLEDGE, ETON COUNTY MICHIGAN, and that the streets as shown on said plat are hereby dedicated to the use of the public.

Witnesses:  
*Eli Traylor*  
Supervisor of the City of Grand Ledge.  
*Edw. A. Taylor*  
L.S.  
Subdivision of the City of Grand Ledge.



This Plat was approved by the Common Council of the City of Grand Ledge Michigan on the 11th day of June 1909.

This Plat was approved by the City Clerk on the 23rd day of June 1909.

*Eli Traylor*  
Supervisor of Grand Ledge Michigan

*Edw. A. Taylor*  
City Clerk

*James S. Taylor*  
Deputy Supervisor

STATE OF MICHIGAN, SS. On this 13th day of July 1909 before me a Notary Public in and for said County personally came the above named ELI TRAYLOR, Supervisor of the City of Grand Ledge, known to me to be the person who executed the above dedication and acknowledged the same to be his free act and deed as such Supervisor.

My Comm. Exp. Dec. 31 1909  
*Edw. A. Taylor*  
Notary Public in and for said County

**SURVEYOR'S CERTIFICATE**  
I hereby certify that the PLAT herein delineated is a correct one and that permanent metal monuments 1 1/2" set in a concrete base 2" in diameter and 28" long have been placed at all points marked thus "o" as there are shown at all angles in the boundary of the land platted at all intersections of streets, and at all intersections of plat as shown on said Plat.

*W. H. Taylor*  
Registered Surveyor

**DESCRIPTION.**  
The land embraced in the annexed Supervisor's Plat No. 2 of the City of Grand Ledge, Eton County, Michigan is described as follows:—Beginning 33 1/2 ft. East and 49 1/2 ft. South by the Center of Section 11, T44N, R14W. Thence East along the south line of that St. 123 1/2 ft., North 49 1/2 ft. to the W. line, East along the W. line 123 1/2 ft., S 64° E 137 1/2 ft., South along the West side of Clinton St. 123 1/2 ft., West on the W. line 183 1/2 ft., South 127 1/2 ft., West along the North side of Superior St. 145 1/2 ft., North along the East line of DeGroot St. 125 1/2 ft., West along the South side of Edwards St. 95 1/2 ft., South 125 1/2 ft., West along the North side of Superior St. 150 1/2 ft., North on W. line 127 1/2 ft., East on the W. line 135 1/2 ft., North on the East line of Jones St. 127 1/2 ft. to the beginning.