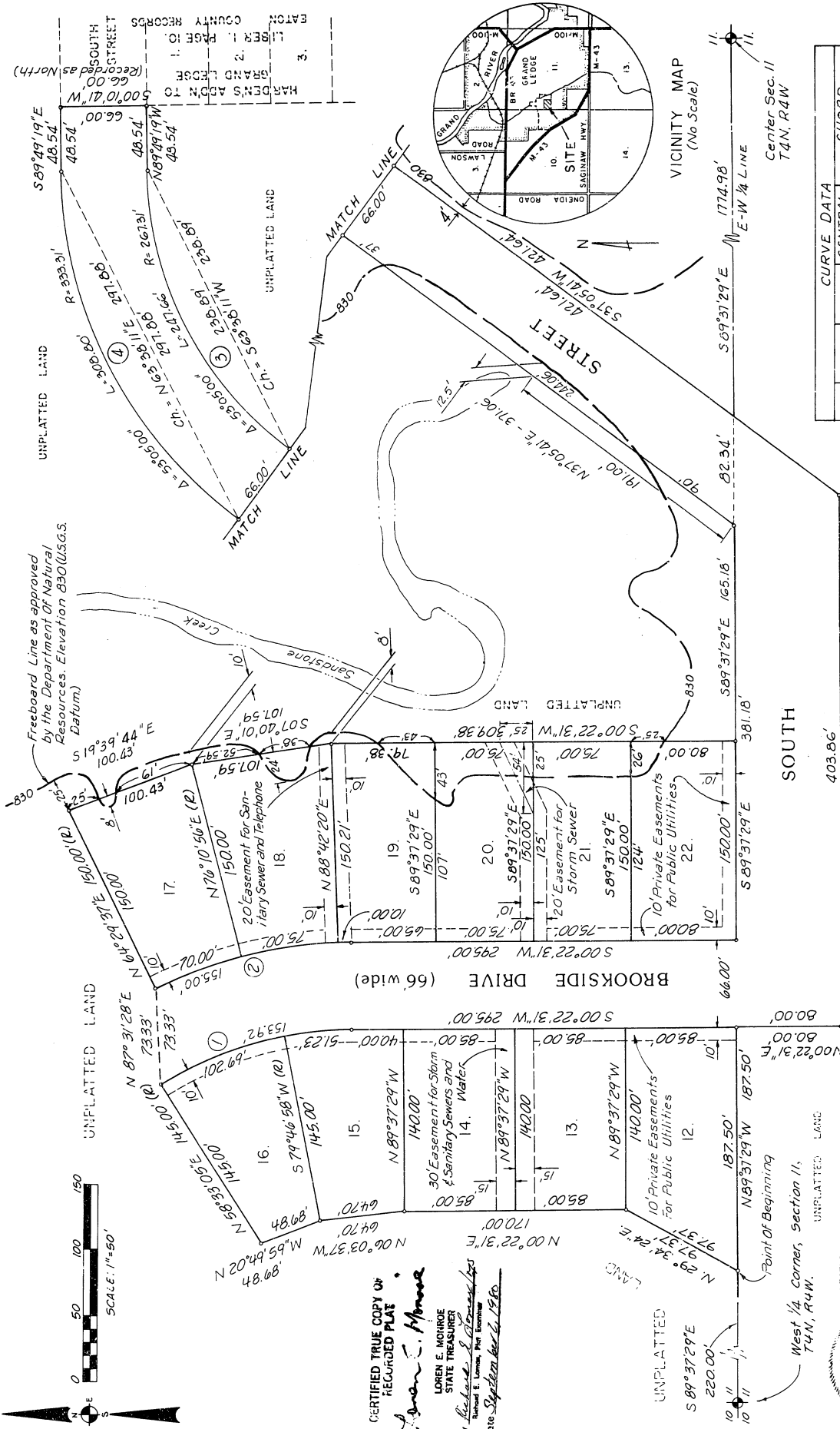


WOODSHOLLOW SUBDIVISION N^o 2

A Subdivision of Part of the West 1/2 of Section 11, Town 4 North, Range 4 West,
City of Grand Ledge, Eaton County, Michigan.



CURVE	RADIUS	ARC	CENTRAL ANGLE	CHORD	BEARING	LENGTH
(1)	277.13'	153.92'	31°47'26"	N15°32'12"W	151.96'	
(2)	343.13'	155.00'	25°52'54"	N12°33'56"W	153.67'	
(3)	267.31'	247.66'	53°05'00"	S63°36'11"W	238.87'	
(4)	333.31'	308.80'	53°05'00"	N63°36'11"E	279.88'	

LEGEND:

A. ALL DIMENSIONS ARE IN FEET.

B. ALL CURVILINEAR MEASUREMENTS ARE ARC DISTANCES.

C. THE BEARING OF N3624.40° W FOR THE CENTERLINE OF STATE HIGHWAY M-43 OBTAINED FROM THE RIGHT OF WAY PLAN OF THE MICHIGAN DEPARTMENT OF TRANSPORTATION FORM-43, CONTROL SECTION 23041, SHEET NO. 69.

D. ALL CONCRETE MONUMENTS ARE SHOWN THIS ◦

E. ALL LOT CORNERS ARE MARKED WITH 1/2" DIA. BY 18" LONG IRON RODS

F. (R) INDICATES RADIAL LOT LINE.

CERTIFIED TRUE COPY OF
RECORDED PLAT

Loren E. Monroe
LOREN E. MONROE
STATE TREASURER

By *Richard E. D. [Signature]*
Richard E. D. [Signature]
Date *September 16, 1980*

