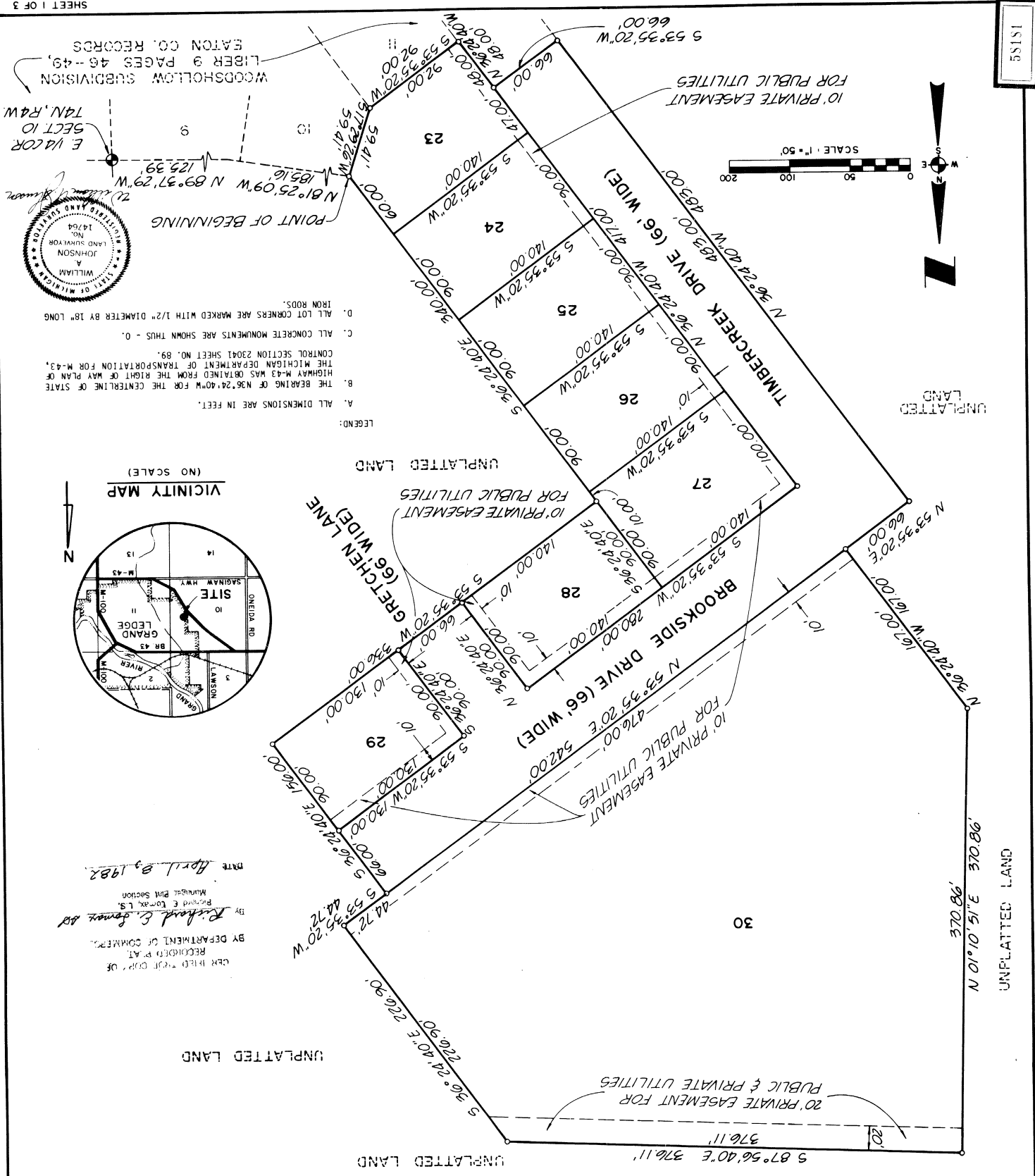


# WOODSHOLLOW SUBDIVISION No 3

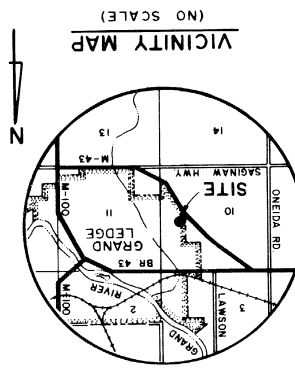
A Subdivision of the East 1/2 of Section 10, Town 4 North, Range 4 West,

City of Grand Ledge, Eaton County, Michigan.

55151



GEN FIELD TYP OUR OF  
RECORDED AT  
BY DEPARTMENT OF COMMERCE  
By *Richard E. Somers, JR*  
Recorder & Tax. LS.  
Municipal Plat Section  
Date *April 23, 1982*



- LEGEND:
- A. ALL DIMENSIONS ARE IN FEET.
  - B. THE BEARING OF N 86°24'40"W FOR THE CENTERLINE OF STATE HIGHWAY M-43 WAS OBTAINED FROM THE RIGHT OF WAY PLAN OF THE MICHIGAN DEPARTMENT OF TRANSPORTATION FOR M-43. CONTROL SECTION 23041 SHEET NO. 89.
  - C. ALL CONCRETE MONUMENTS ARE SHOWN THUS - 0.
  - D. ALL LOT CORNERS ARE MARKED WITH 1/2" DIAMETER BY 18" LONG IRON RODS.



POINT OF BEGINNING  
N 81°25'09"W N 89°37'29"W 125.39'  
E. VACOR  
SECT 10  
T4N, R4W  
WOODSHOLLOW SUBDIVISION  
LIBER 9 PAGES 46--49,  
EATON CO. RECORDS



# WOODSHOLLOW SUBDIVISION N<sup>o</sup> 3

A Subdivision of the East 1/2 of Section 10, Town 4 North, Range 4 West,  
City of Grand Ledge, Eaton County, Michigan.

**CERTIFICATE OF MUNICIPAL APPROVAL**

I certify that this plat was approved by the City Council, of the City of Grand Ledge, at a meeting held January 14, 1982, and was reviewed and found to be in compliance with Act 288, P.A. of 1967. Public water and public sewer service have been installed and are ready for connection.

The municipality has adopted a subdivision control ordinance and zoning ordinance and waives the minimum lot size specified in section 186(d) of Act 288 of 1967.

Fay Shang  
City Clerk

**COUNTY PLAT BOARD CERTIFICATE**

This plat has been reviewed and is approved by the Eaton County Plat Board on Feb. 2, 1982 as being in compliance with all of the provisions of Act 288, P.A. 1967, and the plat board's applicable rules and regulations.

Alvin Starr, Chairman,  
County Board of Commissioners  
Linda M. Mitchell - County Clerk  
Robert Cole, County Treasurer

**COUNTY TREASURER'S CERTIFICATE**

The records in my office show no unpaid taxes or special assessments for the five years preceding Jan. 14, 1982, involving the lands included in this plat.

Robert Cole  
Eaton County  
County Treasurer

**COUNTY DRAIN COMMISSIONER'S CERTIFICATE**

Approved on January 14, 1982 as complying with Section 192 of Act 288, P.A. 1967 and the applicable rules and regulations published by my office in the County of Eaton.

F. Lucille Halsey - Drain Commissioner

**CERTIFICATE OF PLANNING COMMISSION**

I certify that this plat was approved by the Planning Commission of the City of Grand Ledge at a meeting held January 14, 1982

William J. Kane - Acting Chairman

**RECORDING CERTIFICATE**

State of Michigan  
(Eaton County)

This plat was received for record on the 23<sup>rd</sup> day of March, 1982 at 8:50 AM, and recorded in Liber 10 of plats on Page(s) 22-24.

Linda M. Mitchell, Registrar of Deeds



18105