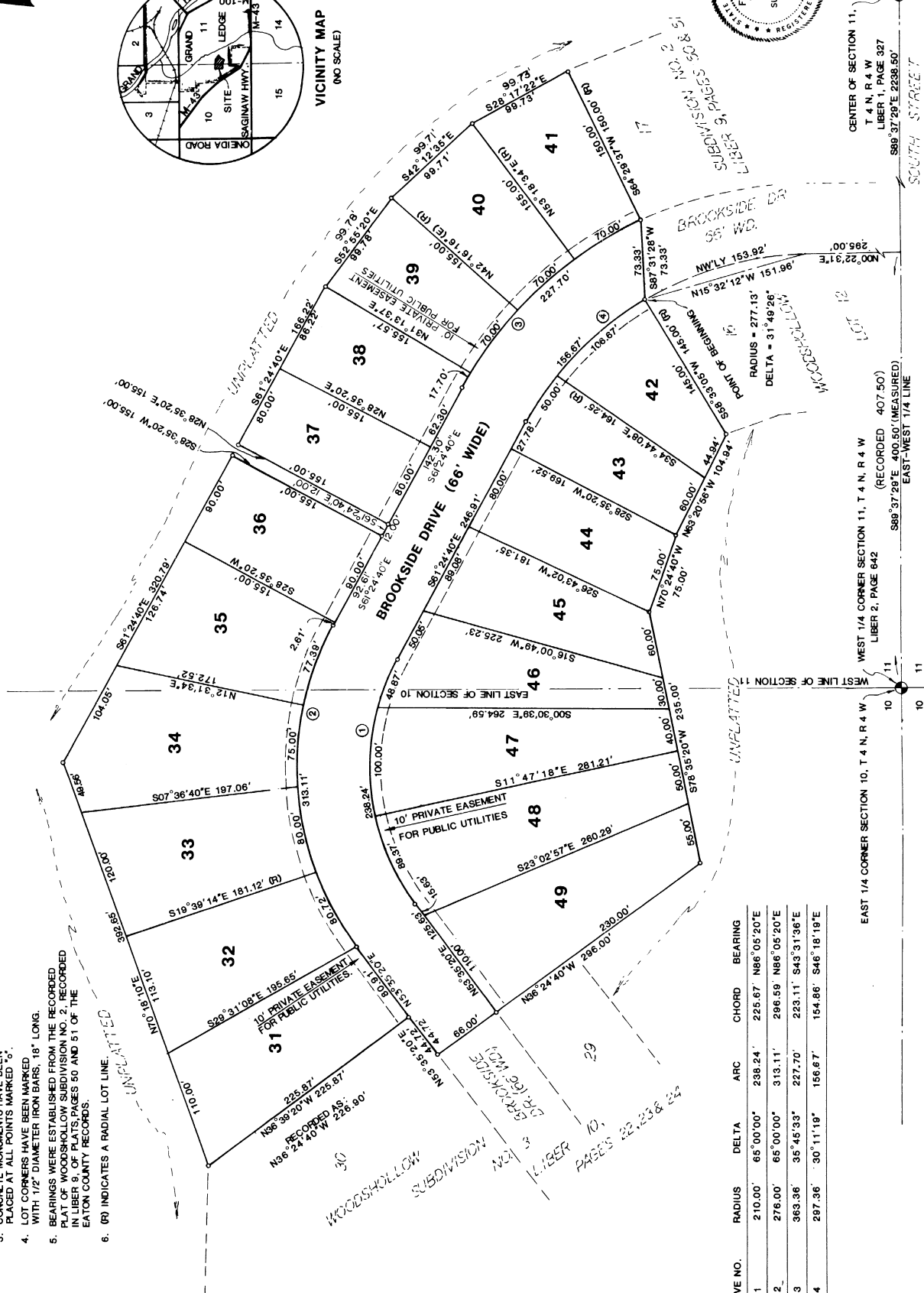
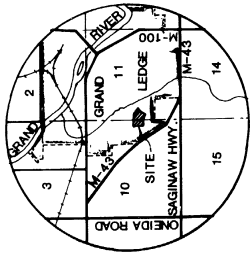
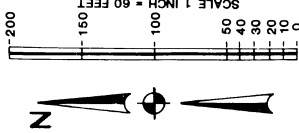


WOODSHOLLOW SUBDIVISION NUMBER 4
A SUBDIVISION OF PART OF THE EAST 1/2 OF SECTION 10, AND PART OF THE WEST 1/2 OF SECTION 11,
TOWN 4 NORTH, RANGE 4 WEST, CITY OF GRAND LEDGE, EATON COUNTY, MICHIGAN

NOTE: SEE SHEET 2 FOR LEGAL DESCRIPTION AND SURVEYOR'S CERTIFICATE.

LEGEND

1. ALL DIMENSIONS ARE IN FEET
2. ALL CURVE DIMENSIONS ARE ARC LENGTHS.
3. CONCRETE MONUMENTS HAVE BEEN PLACED AT ALL POINTS MARKED "C".
4. LOT CORNERS HAVE BEEN MARKED WITH 1/2" DIAMETER IRON BARS, 18" LONG.
5. BEARINGS WERE ESTABLISHED FROM THE RECORDED PLAT OF WOODSHOLLOW SUBDIVISION NO. 2, RECORDED IN LIBER 8 OF PLATS PAGES 50 AND 51 OF THE EATON COUNTY RECORDS.
6. (R) INDICATES A RADIAL LOT LINE.



CURVE NO.	RADIUS	DELTA	ARC	CHORD	BEARING
1	210.00'	65°00'00"	238.24'	225.67'	N88°05'20"E
2	276.00'	65°00'00"	313.11'	296.59'	N86°05'20"E
3	363.36'	35°45'33"	227.70'	223.11'	S43°31'36"E
4	287.36'	30°11'19"	156.67'	154.86'	S46°18'18"E

CENTER OF SECTION 11,
T 4 N, R 4 W
LIBER 1, PAGE 327
S89°37'29"E 2238.50'

WEST 1/4 CORNER SECTION 11, T 4 N, R 4 W
LIBER 2, PAGE 642
S89°37'29"E 400.50' (MEASURED)
EAST-WEST 1/4 LINE

WEST 1/4 CORNER SECTION 10, T 4 N, R 4 W
LIBER 2, PAGE 642
S89°37'29"E 400.50' (MEASURED)
EAST-WEST 1/4 LINE

